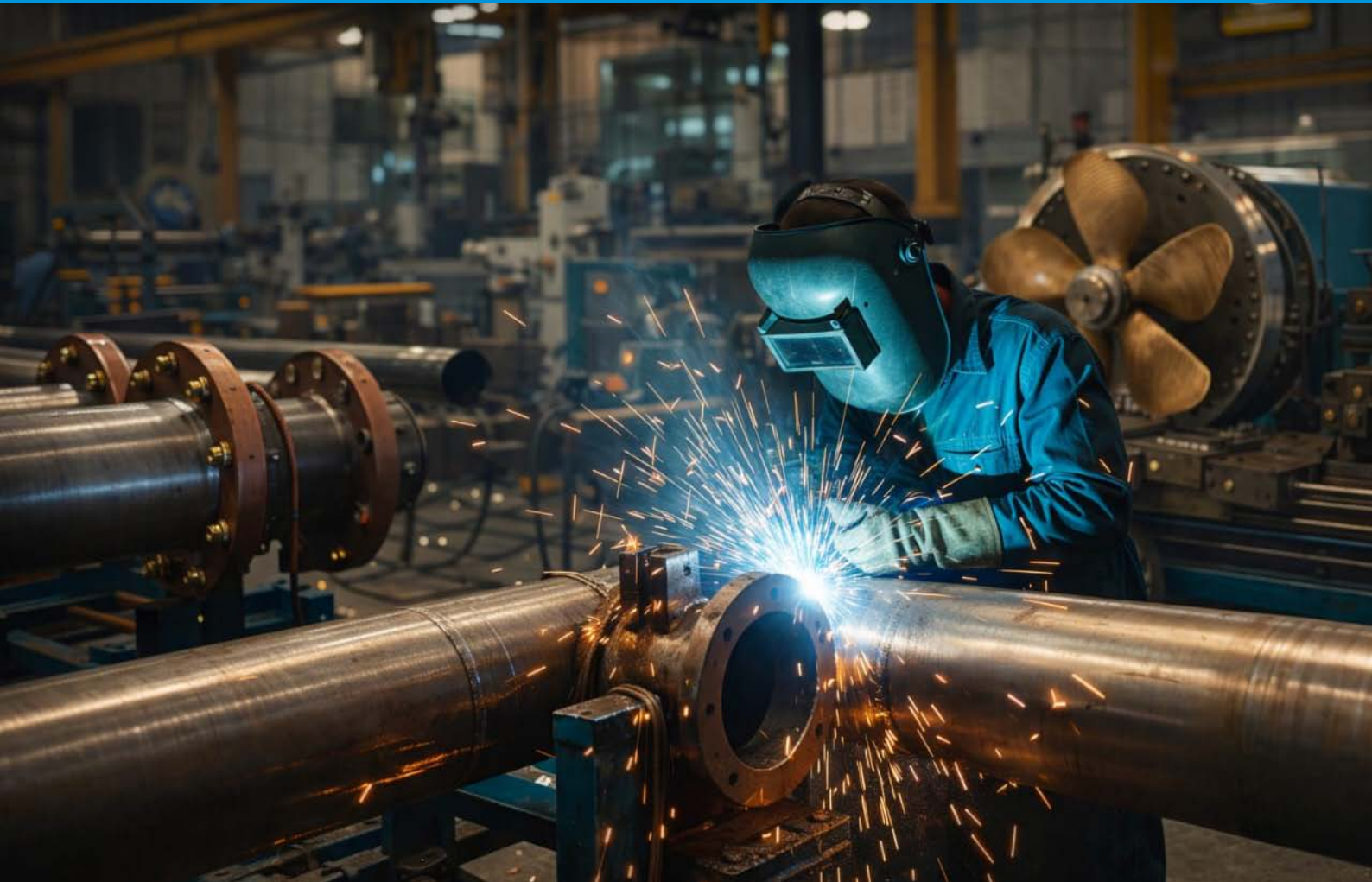




# D-METRIX FAB & PIPING PRIVATE LIMITED

An ISO 9001 : 2015 Certified Company



Importers & Exporters of Ferrous & Non-Ferrous Metals  
Manufacturing & Fabricating Excellence for Land, Air & Sea.



[www.d-metrix.in](http://www.d-metrix.in)

## ABOUT US

**D-Metrix Fab & Piping Pvt. Ltd.**, a part of the PK Group, was established with a vision to become a dependable name in the field of industrial fabrication, piping, and fittings solutions across a wide range of industries.

The company is founded by **Mr. Prakash K. Bishnoi** and **Mr. Suresh K. Bishnoi**, young and dynamic entrepreneurs, under the guidance of **Mr. Kishnaram Bishnoi**, a highly respected veteran of the fittings and fabrication industry with **over 40 years of extensive experience**. His decades of technical knowledge and industry insight form the backbone of the organization's quality-driven approach.

### Decades of Experience, Built for Modern Industry

With a strong blend of **four decades of legacy experience and over a decade of contemporary leadership**, D-Metrix Fab & Piping Pvt. Ltd. stands as a bridge between traditional manufacturing excellence and modern industrial demands.

### Leadership That Delivers

- **Mr. Prakash K. Bishnoi**, having **more than 10 years of industry experience**, leads with a solution-oriented mindset, known for **quick decision-making, fast turnaround, and practical problem-solving**, especially in time-critical industrial and project requirements.
- **Mr. Suresh K. Bishnoi**, as the managing force, oversees operations, planning, and execution, ensuring efficiency, compliance, and seamless coordination across departments.



## INDUSTRIES WE SERVE

We cater to a wide spectrum of industries where **precision fittings and fabrication** are critical, including but not limited to:

- Oil & Gas (Upstream, Midstream & Downstream)
- Petrochemical & Chemical Industries
- Power Plants (Thermal, Renewable & Utilities)
- Refineries & Process Plants
- Pharmaceuticals & Fertilizers
- Water Treatment & Desalination
- Steel, Cement & Heavy Engineering
- Infrastructure & Industrial Projects

## OUR EXPERTISE

We specialize in:

- Custom & heavy fabrication
- High-quality piping fittings
- Application-specific engineered solutions
- Approved and specification-compliant supplies

All products and services are delivered in accordance with **industry standards, customer specifications, and required technical approvals**, ensuring durability, safety, and performance.

## OUR COMMITMENT

Driven by experience, guided by legacy, and executed by a responsive leadership team, **D-Metrix Fab & Piping Pvt. Ltd.** is committed to delivering:

- Consistent quality
- Timely and reliable execution
- Cost-effective solutions
- Long-term value to our clients

We aim to be a trusted partner for industries worldwide where quality fabrication and piping solutions matter.

## QUALITY CONTROL NORMS

- Chemical Testing
- Dimension Inspection
- Hardness testing
- Hydro testing
- Radiography
- Tensile testing
- Visual Inspection



## **OUR VISION:**

To become a trusted global partner in the field of industrial fabrication, piping, and fittings, recognized for engineering excellence, uncompromising quality, and dependable execution across Oil & Gas, process industries, and infrastructure sectors.

## **OUR MISSION:**

- Deliver high-quality fabrication and piping solutions in compliance with ISO 9001:2015 Quality Management System requirements
- Serve a wide range of industries including Oil & Gas, Petrochemical, Power, Chemical, Pharmaceutical, Water Treatment, Infrastructure, and Heavy Engineering
- Provide customized, technically sound, and cost-effective solutions with fast decision-making and quick turnaround
- Maintain strict adherence to customer specifications, approved drawings, and applicable international standards
- Build long-term partnerships through reliability, transparency, and consistent performance
- Continuously enhance process efficiency, employee competence, and technological capability

## **QUALITY POLICY:**

D-Metrix Fab & Piping Pvt. Ltd. is an ISO 9001:2015 Certified Company, committed to delivering products and services that meet the highest standards of quality, safety, and reliability.

## **WE ARE COMMITTED TO:**

- Complying with the requirements of ISO 9001:2015 and continually improving the effectiveness of our Quality Management System (QMS)
- Manufacturing and supplying products that conform to applicable codes, standards, statutory requirements, and customer specifications
- Ensuring effective planning, process control, inspection, and documentation at every stage of fabrication and supply
- Using approved raw materials, qualified procedures, calibrated equipment, and competent manpower
- Achieving customer satisfaction through consistent quality, timely delivery, and responsive service

Quality is embedded in our culture and driven by leadership, process discipline, and continuous improvement.



# WHY CHOOSE US?

We are committed towards our goal of delivering the best services



## LARGEST MANUFACTURER

D-Metrix Fab & Piping Pvt. Ltd.  
is Manufacturing Pipe Fittings  
& Fabrications



## QUICK DELIVERY

We exercise stringent quality control  
measures for ensuring the accurate  
dimension and mechanical properties  
of our products with Timely Deliveries.



## QUALITY ASSURANCE

Professional Staff, Quality of  
Steel and Customer Service  
is Outstanding.



## THIRD PARTY INSPECTION

Our team of experts maintain a  
vigil on the quality of the products.  
Every single piece is attached with  
test certificates and reports.



## LOWEST PRICING

We provide us Great Pricing  
with timely Deliveries.



## CUSTOMER SUPPORT

Build strong relationships with our  
customers - which we achieve, for  
example, by employing and training  
local work forces.

# DIFFERENTIATOR

**D-Metrix Fab and Piping Pvt. Ltd.** specializes in complex, high stakes products like High-Pressure Piping Systems, Modular Piping and Induction Pipe Bending. This capability allows them to handle projects in demanding sectors like nuclear, Oil & Gas and Power Generation, distinguishing them from general manufacturers.

Our products are manufactured under multiple stringent international certifications, including ISO 9001:2015; ASME Code Stamp Piping. This adherence to global benchmarks ensures exceptional product reliability and long-term durability in harsh industrial environments.

Advanced Manufacturing setup with testing, Machining and heat treatment capacity.

**Critical and High-End Piping**

**Durability and Quality Assurance**

**Global Supply Chain Efficiency**





**1988**

PK Group founded as a trading company, specializing in pipes and fittings supply.

**2008**

Incorporated as PK TUBE strengthening its corporate structure.

**2014**

Achieved a major milestone by enhancing capacity to 5000 MT per annum. Supported by advanced infrastructure and modern fabrication technology.

**2018**

Incorporated as a new manufacturing unit PERAMOUNT FORGE & FITTINGS COMPANY more with capacity to 7000 MT per annum.

**2025**

Incorporated as D-METRIX FAB AND PIPING PRIVATE LIMITED strengthening its corporate structure.

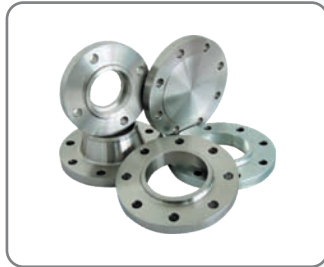
# Product Range



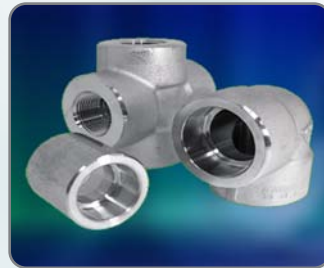
**PIPES & TUBES**



**PIPE FITTINGS**



**FLANGE FITTINGS**



**FORGE FITTINGS**



**PIPE SPOOL**



**INDUCTION PIPE BEND**



## FABRICATION & ASSEMBLY

We undertake custom metal fabrication including pipe spools, structural fabrication, and assemblies as per approved drawings and client specifications.

### SCOPE OF FABRICATION INCLUDES:

- Pipe spools with flanges & fittings
- Structural fabrication (portal huts, frames, supports)
- Skids, platforms, handrails & brackets

### SIZE & CAPACITY:

- Pipe Size: ½" NB to 48" NB
- Pipe Schedule: SCH 10 to SCH XXS
- Fabrication Length: As per drawing
- Flange Rating: 150# to 2500#

### MATERIALS:

- Carbon Steel / Stainless Steel / Alloy Steel / MS

### STANDARDS & QUALITY:

- Fabrication as per ASME / IS / EN standards
- Welding as per approved WPS
- Inspection as per project requirement

**Honesty + Quality of Goods + Quick Service = Good Healthy Business**

## PIPES:

<b>Range</b>	: 1/8 NB To 1200 NB in Sch. 5,10, 20, 30, 40, 60, 80, 100, 120, 140, 160, XXS.
<b>Stainless Steel</b>	: ASTM A312, A358-TP 304, H, L, 316, H, L, Ti, 309, 310, 317L, 321, 347, 904L etc.
<b>Carbon Steel</b>	: ASTM A-106 Gr. B, ASTM A 53, API 5L.
<b>Alloy Steel</b>	: ASTM A 335- P5, P9, P11, P12, P21, P22, P91, P92 (with IBR Test Certificate).
<b>Nickel Alloy</b>	: Nickel Alloys, Hastelloy, Nickel, Monel, Inconel, Alloy 20 etc.
<b>Non Ferrous Metals</b>	: Copper, & Copper Alloys.
<b>Low Temperature</b>	: ASTM - 333 Gr. 6.
<b>Mild Steel &amp; Galvanised. Pipe</b>	: IS 1239, IS 3589 (Fe 330, Fe 410).
<b>Form</b>	: Round, Square, Rectangle, Hydraulic, Horn Tube etc.
<b>Length</b>	: Standard length & Cut length.
<b>Value Added Services</b>	: Draw, Polish, Galvanizing, Heat Treatment, Sand Blasting, Machining etc
<b>Test Certificate</b>	: MTC, IBR TC, Lab. TC from Govt. App. Lab. with Third Party Inspection.
<b>Specialize</b>	: IBR Pipes, Fabricated Pipes (with Radiography) & Odd size etc.
<b>Note</b>	: [ We also supply heavy thickness pipes till 100mm ]

## TUBES:

<b>Range</b>	: 1/4" OD to 12" OD in Guage : 25 Swg. to 10 Swg.
<b>Stainless Steel</b>	: ASTM A-213 & A-249-TP 304, H, L, 316, H, L, Ti, 309, 310, 317L, 321, 347, 904, L 202.
<b>Carbon Steel Tube</b>	: BS 3059 Gr. 360 / 440, SA, 179, SA / ASTM A 210 Gr. A 1.
<b>Alloy Steel Tube</b>	: ASTM A 213 - T-1 1, T-12, T-22, T-5, T-9 etc.
<b>Nickel Alloy</b>	: Nickel Alloys, Hastelloy, Nickel, Monel, Inconel, Alloy 20 etc.
<b>Non Ferrous Metal</b>	: Copper Cppper Alloys.
<b>Other Pipes &amp; Tubes</b>	: ERW/ CDW Boiler Tubes, Air Heater Tubes & Cold Drawn Seamless Tubes.
<b>Special Tube</b>	: Capillary Tube, Precision Tubes Instrumentation Tube, Condensers Tubes etc.
<b>Form</b>	: Round, Square, Rectangle, Coil, 'U' Shap, Hydraulic Tube & Horn Tube.
<b>Length</b>	: Standard length & Cut length.
<b>Other Services</b>	: Draw, Polish (Electro & Comm.), Heat Treatment, Bending, Machining.
<b>Test Certificate</b>	: MTC, IBR TC, Lab. TC from Govt. App. Lab. with Third Party Inspection.
<b>Specialize</b>	: *Capillary Tube, IBR Tubes, Cupro Nickel Tube, Dioxide Copper Tube. *Square, Rectangle & Other Odd Size.



## **FLANGES:**

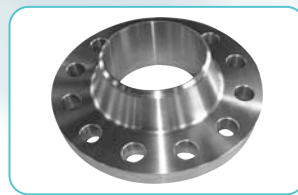
- Range** : 15 NB to 750 NB. - LBS : 150#, 300#, 600#, 900#, 1500#, & 2500#
- Table** : ASA 150 & ASA 300- D, E, F, H, DIN, ND-6, 10, 16, 25, 40 etc.
- Table** : SORF, WNRF, BLRF, SWRF, LAP Joint, Threaded, Reducing, Spectacle etc.
- Stainless Steel** : ASTM A-182 & A-240 : F-304, H, L, 316, H, L, Ti, 309, 310, 317L, 321, 347, 904L.
- Carbon Steel** : ASTM A 105, A-350 LF 2, IS 2062, A-516 etc.
- Alloy Steel** : ASTM A 182- F5, F9, F11, F12, F21, F22 & F91.
- Nickel Alloy** : Cupro Nickel, Hastelloy, Nickel, Monel, Inconel, Alloy 20 etc.
- Duplex** : ASTM A 182- F 51, S31803, F55, F60 etc.
- Other Services** : Heat Treatment, Galvanizing, Machining, Threading as per Guage etc.
- Test Certificate** : MTC, IBR TC, Lab. TC from Govt. App. Lab. with Third Party Inspection.
- Specialize** : IBR Flanges, Long Neck Weld Flange, Spectacle etc.



SORF FLANGES



BLRF FLANGES



WELDNECK FLANGES



SWRF FLANGES



SLIPON FLANGES



RTJ SORF FLANGES



SCREWED FLANGES



LAP JOINT FLANGES





## BUTT WELD FITTINGS

**RANGE** : 15 NB To 1200 NB in Sch. 5,10, 20, 30, 40, 60, 80, 100, 120, 140, 160, XXS.

**Type:**

**Bend** : Long & Short, Radius to 1.5D, 3D, 5D, 6D, 10D etc.

**Elbow** : 45 Deg., 90 Deg. & 180 Deg. Tee - Equal Tee, Unequal Tee.

**Reducer** : Con & Ecc, CAP, Nipple - Swage & Barrel, Stubend - Long & Short, etc.

**Stainless Steel** : ASTM A 403 WP - TP 304, H, L, 316, H, L, Ti, 309, 310, 317L, 321, 347, 904L, 202.

**Carbon Steel** : ASTM A 234 WPB, A-420 WPL6.

**Alloy Steel** : ASTM A 234 WP - P5, P9, P11, P12, P21, P22, P91, & P92.

**Mild Steel &**

**Galvanised** : ISI Mark.

**Nickel Alloy** : Cupro Nickel, Hastelloy, Nickel, Monel, Inconel, Alloy 20 etc.

**Other Form of Fitting** : DAIRY FITTING & ALSO AS PER DRAWING.

**Other Services** : Polish, Heat Treatment, Galvanizing, Sand Blasting, etc.

**Test Certificate** : MTC, IBR TC, Lab.TC from Govt. App. Lab. with Third Party Inspection.

## FORGED FITTINGS

**Range** : 15 NB To 100 NB in LBS : 3000#, 6000#, 9000#.

**Form** : S/W. & SCR.D.

**Type** : Elbow, Tee, Union, Cross, Swage Nipples Coupling, CAP, Plug, Bush, Sokolet, Weldolet, Thredolet, Elbolet, Nipolet.

**Stainless Steel** : ASTM A 182 F-304, H, L, 316, H, L, Ti, 309, 310, 317L, 321, 347, 904L.

**Carbon Steel** : ASTM A-105, A-350 LF2.

**Alloy Steel** : ASTM A 182- F5, F9, F11, F12, F22, F91, F92.

**Nickel Alloy** : Cupro Nickel, Hastelloy, Nickel, Monel, Inconel, Alloy 20 etc.

**Other Form of Fitting** : COMPRESSION / INSTRUMENTATION / HYDRAULIC & AS PER DRAWING.

**Other Services** : Heat Treatment, Galvanizing, Sand Blasting, Machining, Threading etc.

**Test Certificate** : MTC", IBR TC, L-1, T" from Govt. App. Lab. with Third Party Inspection.

**Specialize** : IBR Fitting, Non IBR Fitting



## DEFENCE & MARINE MANUFACTURING

We design and manufacture precision-engineered components for Defence and Marine applications, suitable for naval vessels, offshore systems, and critical defence equipment. All components are manufactured as per customer drawings, approved standards, and stringent quality requirements to ensure reliability in harsh operating conditions.

Component Type	Material Options	Size Range
Machined Housings & Bodies	CS, SS, Alloy Steel	Up to 800 mm
Shafts & Precision Rods	SS, Alloy Steel	Ø20 mm - Ø300 mm
Flange Components & Assemblies	CS, SS	Up to 600 NB
Custom Defence & Marine Parts	As per specification	As per drawing



## **NICKEL ALLOY:**

### **NICKEL 200 / 201**

Commercial pure nickel with good mechanical properties and excellent resistance to many corrosive media. Important characteristics are its magnetic and magnetostrictive properties, the high thermal and electrical conductivity at low gas content.

### **MONEL 400 (ALLOY 400)**

Alloy 400 is especially resistant to saline and other acids in ventilated condition. It is successfully employed in the salt winning process. Alloy 400 is especially suited for employment in sea breakage water at high speed, where resistance against cavitation and erosion is of great importance. This alloy is very resistant to solvents, glass etching agents, sulfuric and other acids and virtually to all alkalis. This grade is not sensitive to stress corrosion cracking in oxidizing media. Alloy 400 can be employed at temperatures up to 550° Celsius.

### **MONEL K-500 (ALLOY K-500)**

An age-hardening alloy with the same corrosion resistance as Alloy 400, though with increased tensile strength and hardness. Alloy K-500 retains its strength up to temperature of about 650° Celsius.

### **INCONEL 600 (ALLOY 600)**

Alloy 600 has excellent resistance to oxidation at temperatures up to 1175° Celsius and is also resistant to a variety of corrosive media. It retains its high strength up to about 650° Celsius. Even at lowest temperature, alloy 600 is employed in components of power plants. This grade can be welded without thermal retreatment.

### **INCONEL 625 (ALLOY 625)**

Excellent corrosion resistance with high strength and ductility at temperature up to 700° Celsius applicable up to 1100° Celsius. Alloy 625 is weldable without thermal retreatment.

### **INCOLLOY 825 (ALLOY 825)**

Resistance to sulfuric acid, phosphoric acid solvents and sea water as well as to many oxidising chemicals. Alloy 825 has good resistance to reducing acid. It can be employed without thermal treatment after the welding process.

### **HASTALLOY C-276 (ALLOY C-276)**

Today probably one of the best and manifold alloys in the market, thus employed in extremely corrosive reducing and oxidising applications. Alloy C-276 has excellent resistance to strong oxidising media contaminated by chloride, dry chloride acid formate acid, acetic hydride solutions, sea water solutions and saline solutions. The alloys is resistant to the corrosive influence of hydrochloride acid, hydrochloride chlorine dioxide solutions.

### **HASTALLOY C-4 (Alloy C-4)**

Excellent resistance against strong oxidising agents, hot contaminated mineral acid, solvent, chlorine and media contaminated by chlorine (organic and inorganic), dry chloric acid, formic acid, acetic acid, acetic hydride solutions, sea water solutions and saline solution. This alloy has high ductility and corrosive resistance even in temperature range of 650-1040° Celsius. Alloy C-4 is resistant against the formation of grain boundary carbides and can thus be used in most cases without heat treatment after welding.

### **ALLOY 20**

Alloy 20 is a high-alloyed stainless steel. Its corrosion properties surpass those of usual stainless qualities. For example, alloy 20 has excellent stress corrosion to boiling 20-40% sulfuric acid. Although alloy 20 was originally developed for usage in sulfuric environment, its range application has been steadily extended and today also includes machining of artificial rubber, plastic, synthetic fiber etc. In pharmaceutical and food producing application, where purity has to be guaranteed, Alloy 20 is employed to prevent metallic contamination. The most important advantages of this grade are its excellent mechanical properties as well as its comparatively easy machineability.

## FORMULA OF CALCULATING WEIGHT

- 1) Weight of Stainless Steel Pipe  
O.D. (mm) - W. Thick (mm) X W. Thick (mm) X 0.0248 = Wt. Per Mtr.  
O.D. (mm) - W. Thick (mm) X W. Thick (mm) X 0.00756 = Wt. Per Feet.
- 2) Weight of Stainless Steel Round Bar  
Dia (mm) X Dia (mm) X 0.00623 = Wt. per Mtr.  
Dia (mm) X Dia (mm) X 0.0019 = Wt. per Feet.
- 3) Weight of Stainless Steel Square Bar  
Dia (mm) X Dia (mm) X 0.00788 = Wt. per Mtr.  
Dia (mm) X Dia (mm) X 0.0024 = Wt. per Feet.
- 4) Weight of Stainless Steel Hexagonal Bar  
Dia (mm) X Dia (mm) X 0.00630 = Wt. per Mtr.  
Dia (mm) X Dia (mm) X 0.002072 = Wt. per Feet.
- 5) Weight of Stainless Steel Flat Bar  
Width (mm) X Thickness (mm) X 0.00798 = Weight per Mtr.  
Width (mm) X Thickness (mm) X 0.00243 = Weight per Feet.
- 6) Weight of Stainless Steel Sheets & Plates  
Length (Mtrs) X Width (Mtrs) X Thick (mm) X 8 = Weight per PC.  
Length (Feet) X Width (Feet) X Thick (mm) X 3/4 = Weight per PC.
- 7) Weight of Stainless Steel Circle  
Dia (mm) X Dia (mm) X Thck (mm) / 160 = Gms. per PC.  
Dia (mm) X Dia (mm) X Thck (mm) X 0.0000063 = Kg. per PC.
- 8) Weight of Brass Pipes / Copper Pipes  
O.D. (mm) - W. Thick (mm) X W. Thick (mm) X 0.0260 = Wt. Per Mtr.
- 9) Weight Lead Pipe  
O.D. (mm) - W. Thick (mm) X W. Thick (mm) X 0.0345 = Wt, Per Mtr.
- 10) Weight of Aluminium Pipe  
O.D. (mm) - W. Thick (mm) X W. Thick (mm) X 0.0083 = Wt. per Mtr.
- 11) Weight of Aluminium Sheet  
Length (Mtrs) X Width (Mtrs) Thick (mm) X 2.69 = Weight per PC.

## APPLICATION OF PIPE & FITTING

- CHEMICAL
- SUGAR INDUSTRIES
- OIL & GAS
- REFINERIES
- TEXTILE & FERTILIZERS
- RAILWAY
- PHARMACEUTICAL
- SHIP BUILDING
- GOVERNMENT ORG.
- ACID INDUSTRIES
- OFFSHORE
- OIL MILLS
- MINING
- BEVERAGE & DISTELLARY
- PUMP & VALVES PLANT
- POWER PLANT
- ENGINEERING COMPANY
- PAPER MILLS & PULP INDUS.
- NUCLEAR POWER
- PETROCHEMICAL INDUSTRIES
- DEFENSE & PORT
- SUGAR, DAIRY & FOOD INDUS.
- CONSTRUCTION
- AUTOMOBILE INDUSTRIES
- CEMENT
- STEEL PLANT
- CEMENT & MINES INDUSTRIES





## D-METRIX FAB & PIPING PRIVATE LIMITED

An ISO 9001 : 2015 Certified Company

Importers & Exporters of Ferrous & Non-Ferrous Metals  
Manufacturing & Fabricating Excellence for Land & Air.



**Head Office:**

Plot No. 346/352, 2nd Floor, Office No. 206,  
Maulana Azad Road, Mumbai - 400 004.

**Manufacturing Unit:**

Plot No. E-459, RIICO Industrial Area, Kankani Tehsil, Luni, Jodhpur - 342802.

Mobile: +91-9351670000 / +90-9920999118 / +91-9669258578

Email: sales@d-metrix.in • www.d-metrix.in